

SERIES LST IN POLYPROPYLENE



Sizes: 2", 3", 4", 6" and 8"

Pressure Ratings: 40 PSI and full vacuum; see chart below for specific sizes/temperatures.

Body and Cover: Available with pipe connections of 2", 3" threaded or flanged. 4", 6" and 8" sizes are flanged only.

Basket Strainer Design: 2", 3" and 4" sizes have a 1/8" (3.2mm) wall thickness with 1/8" diameter holes as standard. 6" and 8" sizes have a 3/16" (4.8mm) wall thickness with and 1/4" diameter holes standard. Stainless steel baskets are also available. For optional perforation sizes, please consult factory.

Materials of Construction: In all sizes the bodies, covers and baskets are polypropylene. 6" and 8" sizes have fiberglass reinforced overwrap for added strength. For further information on optional stainless steel baskets, contact factory. O-ring seals are Viton; other seal materials available. External molded hand knobs are phenolic with brass threaded inserts; assembly tie rods and bolts are type 303 stainless steel.

Superior Features:

- Non-jamming and quick removal cover for ease of cleaning. No tools needed.
- High performance and competitive cost is a direct result of simple heavy-duty construction.
- Sturdy perforated baskets designed for ease of servicing and long-life.
- Large basket capacity for less frequent cleaning.
- High flow capability with pressures to 40 PSI. See chart.
- Optional Gauge Guard connections for measuring drop across a clean versus a debris-filled basket. Gauge Guards protect gauges from corrosion and clogging.



OPERATING PRESSURES vs. TEMPERATURE

POLYPRO Pipe Size	TEMPERATURE AND PRESSURES											
	75°F PSI	24°C BARS	100°F PSI	38°C BARS	120°F PSI	49°C BARS	140°F PSI	60°C BARS	160°F PSI	71°C BARS	180°F PSI	82°C BARS
2	40	2,76	35	2,41	30	2,07	26	1,79	20	1,38	2	0,14
3	40	2,76	35	2,41	30	2,07	26	1,79	20	1,38	2	0,14
4	30	2,07	25	1,73	22	1,52	20	1,38	15	1,04	2	0,14
6	40	2,76	35	2,41	30	2,07	26	1,79	20	1,38	2	0,14
8	30	2,07	25	1,73	22	1,52	20	1,39	15	1,04	2	0,14

NOTES: Full vacuum rating to maximum of 160°F (71°C).

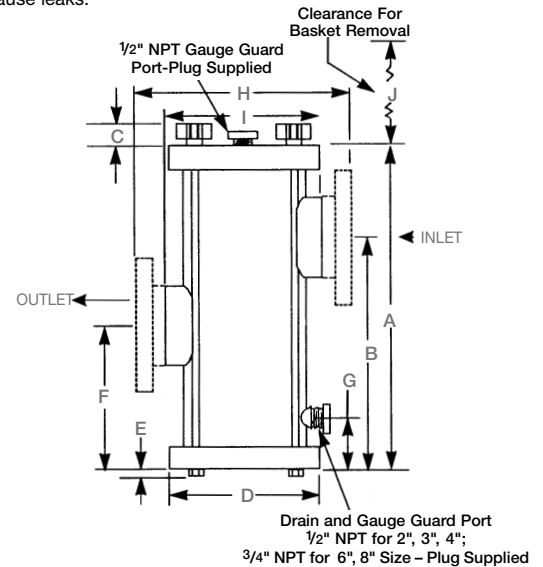
CAUTION: Threaded connections with polypropylene are not recommended above 15 PSI as they can cause leaks.

DIMENSIONS

	SIZES									
	2		3		4		6		8	
	In.	mm	In.	mm	In.	mm	In.	mm	In.	mm
A	14	356	17 3/8	442	22	559	31	787	42	1067
B	10 5/8	270	13 3/16	335	16 13/16	427	16 1/4	413	23 1/2	547
C	2 3/16	56	2 7/16	62	2 11/16	68	4	102	4	102
D	5 3/4	146	8	203	10	254	10 3/4	273	12 3/4	324
E	1/4	6	3/8	10	3/8	10	—	—	—	—
F	5 7/8	150	7 1/2	191	7 3/4	197	16 1/4	413	23 1/2	597
G	7/8	22	1	25	1	25	1	25	1	25
H	9 1/4	235	12 1/4	311	16 7/8	429	24	610	31 3/4	806
I	6	152	9 3/8	238	—	—	—	—	—	—
J	12	305	15	381	18	457	27	686	37	940

MODEL NUMBERS

POLYPRO	SIZES				
	2	3	4	6	8
Threaded	LST0200VT-PP	LST0300VT-PP	N.A.	N.A.	N.A.
Flanged	LST0200VF-PP	LST0300VF-PP	LST0400VF-PP	LST0600VF-PP	LST0800VF-PP



NOTE: Illustration is for 2", 3" and 4" size design. The 6" and 8" sizes are inline design where "B" and "F" dimensions are the same.

BASKET SPECIFICATIONS

Description	SIZES									
	2		3		4		6		8	
	In.	mm	In.	mm	In.	mm	In.	mm	In.	mm
Basket Diameter	3	76	4 3/4	121	6 1/2	165	8	203	10	254
Basket Length	7	178	9	229	11	279	26 5/8	676	37 5/8	956
Hole Diameter	1/8	3	1/8	3	1/8	3	1/4	6	1/4	6
Hole Center	7/32	5.5	7/32	5.5	7/32	5.5	3/8	9.5	3/8	9.5
	In.	cm	In.	cm	In.	cm	In.	cm	In.	cm
Basket Open Area	19.0°	123°	40°	258°	68°	439°	70°	451°	128°	852°
Basket Capacity	40.0°	6552°	153°	2212°	300°	4916°	1200°	19665°	2650°	43426°