

Pressure & Temperature Tridicator Gauges



Standard Features:

- Stainless steel connection
- 3" steel case - 2 1/2" optional
- Pressure and temperature
- Unique short probe requires minimal depth in process
- Dual english and metric ranges
- Back center mount

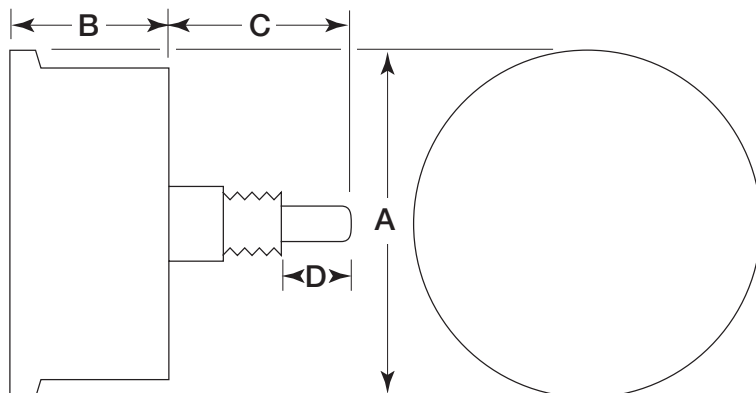
Specifications:

Gauge has heavy flat glass lens. Gauge case and bayonet ring are 304 SS 1/4" NPT. Center back connection and temperature sensor stem are brass. Composite length of 1/4" NPT connection and sensor stem is 1.4" max. Sensor stem alone is .633" max.

Pressure gauge accuracy is 3-2-3.
Temperature gauge is accuracy is 1%.

Pressure Range	Temperature Range	Center Mount Part #*
0-15 PSI	0-180°F	PT015C-SS
0-30 PSI	0-180°F	PT030C-SS
0-60 PSI	0-180°F	PT060C-SS
0-100 PSI	0-180°F	PT100C-SS
0-160 PSI	0-180°F	PT160C-SS
0-200 PSI	0-180°F	PT200C-SS

* 3" standard, add -250 for 2 1/2" face; example PT015C-SS-250



Case	A	B	C	D
2 1/2"	2 11/16"	1 9/64"	1.4	9/16"
3"	3 1/4"	1 3/8"	1.4	9/16"